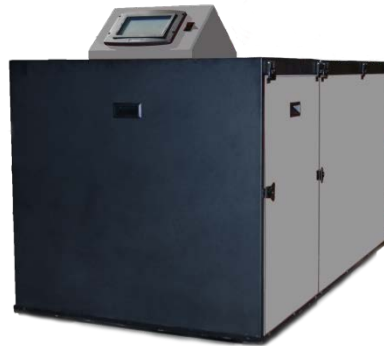


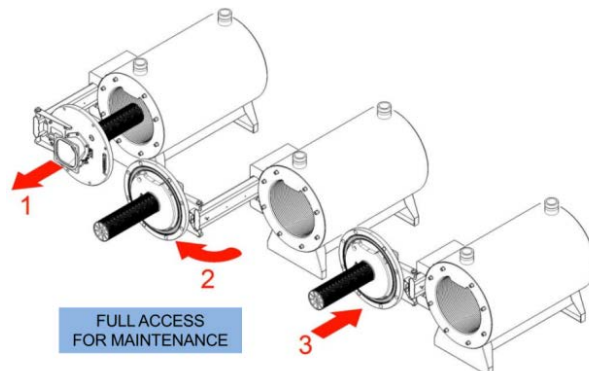


## THE POWER OF CONDENSING EFFICIENCY



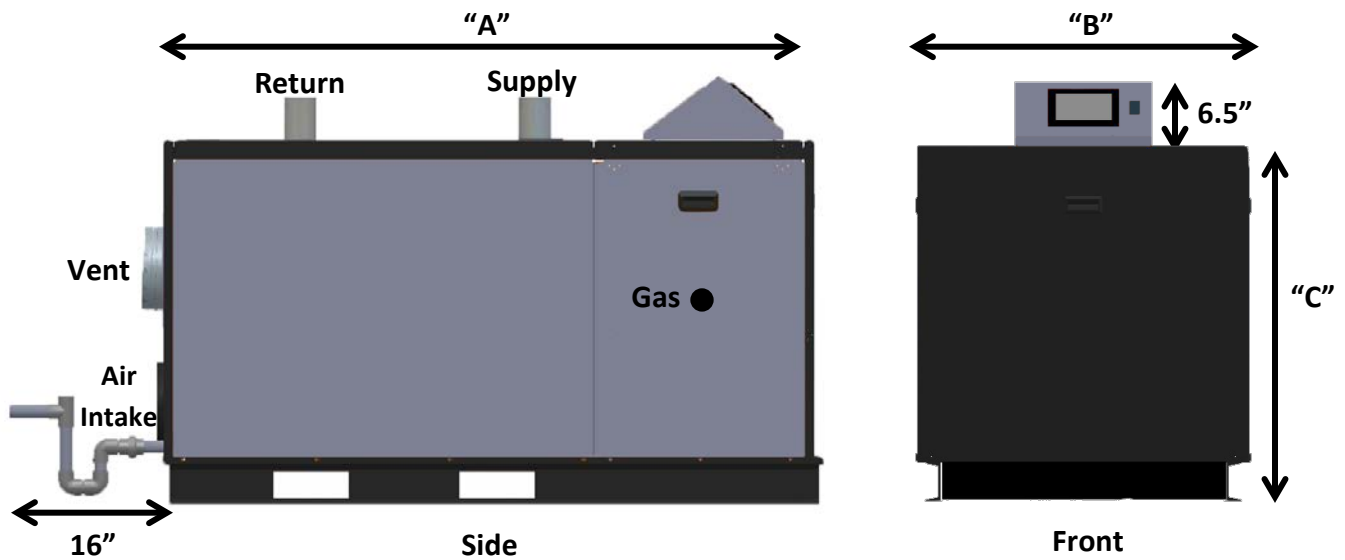
BFit is the latest condensing boiler technology from Bryan Boilers. Features Include:

- Over 97% Thermal Efficiency
- 1000, 1250, 1500 and 2000 MBH Input Models
- 316L Stainless Steel Watertube Heat Exchanger (Robust and Durable)
- Compact Design for Minimum Footprint (46% Smaller Installed Space)
- Low Waterside Pressure Drop
  - Minimum Flow Rates
  - Smaller Pump Selections
  - Electrical Savings
- Low NOx Emissions (Single Digits)
- 5-to-1 Modulation Turndown
- Concert Boiler Control, Advanced Touch Screen Display
- Easy to Service and Maintain
  - Swing Out Door for Full Access to Heat Exchanger & Burner



## Flow Rates and Pressure Drops

Model Sizes	20°F Δ T (Max)		25°F Δ T		30°F Δ T		35°F Δ T		40°F Δ T		45°F Δ T (Min)	
	Flow (GPM)	Δ P (Ft.Hd.)	Flow (GPM)	Δ P (Ft.Hd.)	Flow (GPM)	Δ P (Ft.Hd.)	Flow (GPM)	Δ P (Ft.Hd.)	Flow (GPM)	Δ P (Ft.Hd.)	Flow (GPM)	Δ P (Ft.Hd.)
BFIT-1000	97	11.0	78	6.7	65	5.2	55	4.1	49	3.8	43	3.4
BFIT-1250	121	16.0	97	11.0	81	7.2	69	6.1	61	5.2	54	3.8
BFIT-1500	146	16.7	116	10.5	97	8.4	83	6.0	73	5.0	65	4.2
BFIT-2000	194	19.0	155	13.4	129	10.0	111	8.3	97	6.7	86	5.0



## Specifications, Ratings and Dimensions

MODELS	INPUT		GROSS OUTPUT (MBH)	"A" LENGTH (INCHES)	"B" WIDTH (INCHES)	"C" HEIGHT (INCHES)	GAS CONN. (INCHES)	SUPPLY GROOVED CONN. (INCHES)	RETURN GROOVED CONN. (INCHES)	VENT SIZE (INCHES)	AIR INTAKE SIZE (INCHES)	APPROX SHIPPING WEIGHT (LBS)
	MIN (MBH)	MAX (MBH)										
BFIT-1000	200	1000	970	45"	35"	36.5"	1" NPT	3"	2"	8"	8"	780
BFIT-1250	250	1250	1213	45"	35"	36.5"	1" NPT	3"	2"	8"	8"	780
BFIT-1500	300	1500	1455	65"	35"	36.5"	1.25" NPT	3"	2.5"	8"	8"	1050
BFIT-2000	400	2000	1940	65"	35"	36.5"	1.25" NPT	3"	2.5"	8"	8"	1150